



WELCOME



ACADEMIC EXCELLENCE

Current Student Body

Ethnicity	Students
Asian	2%
Black	28%
Hispanic/Latino	7%
Multi-Racial	6%
White	57%
Total	565

K-8 Services	Students
Early Intervention Services (EIP) and Remedial Education Services (REP)	15%
Exceptional Student Services (ESE)	9%
Free and Reduced Lunch	21%
Gifted Services	27%
504 Plan	7%

Future Student Body

2018-2019 Enrollment Lottery

Applications Received	Spots Available
896	73

Full Build Out

2018-2019	588 Students
2019-2020	588 Students



50%

NWEA's ideal (the norm)

65%

The Museum School's aggressive goal

70-83%

The Museum School's typical growth rate range

* percentage of students
meeting or exceeding their
growth projection



Milestones

	DeKalb	State	TMS
ELA	30%	39%	72%
MATH	27%	41%	64%
SCIENCE	24%	39%	67%
SS	23%	34%	71%

After TMS...

- Most Museum School graduates attend Druid Hills High School.
- Many TMS alum are enrolled in Druid Hills High School's Pre-IB program, in preparation for the 11-12th grade IB program.
- TMS is preparing students academically, behaviorally and socially.
- TMS graduates were recently surveyed to better understand their high school experience, specifically their preparedness for high school.

Service Learning

Annual TMS Service Learning Projects: 9

Museum School students impacted: 565

Local children, families, and
community members impacted:

1000+



Clubs

Garden Club

Beta Club

Book Club

Student
Government

Yearbook

Newspaper

Rocketry

Extra- Curricular Activities

Orchestra

Jr. Chorus

Senior Choir

Scouts

Museum School Explorers are BUSY!

Museum School Explorers are ACTIVE!

Athletics

Cross-Country

Basketball

Soccer

Swimming

Running Club

Girls on the Run

Volleyball

Track and Field

Ultimate Frisbee

Recognition

CELEBRATING OUR SUCCESSES



FINANCIAL SUSTAINABILITY

2017-2018 Revenue

Total Revenue:
\$6.5 Million

94% from QBE
Funding

Total operating
expenses: \$5.6 Million

90%
of expenses
directly related
to classroom
instruction

2017-2018
Expenses

Our Mission

The mission of The Museum School of Avondale Estates is to inspire students, teachers and the community to collaborate to develop strong critical thinking, interpersonal and academic skills in our students which will prepare them for real-world success.

Focus on Diversity

- Strategic Actions for Increased Diversity Plan
 - Board Diversity
- Staff Diversity Committee
 - Student Recruitment
 - Weighted Lottery

The Charter School's board of directors will reflect the socio-demographic diversity of the community it serves.

To achieve this, the board will elect at least two new socio-demographically diverse members by the end of the charter term.

Board Diversity

The Charter School's faculty and staff will reflect the socio-demographic diversity of the community it serves.

To achieve this, during each year of the charter term, at least 30% of the charter school's newly hired staff will have experience working within the school's defined community or a community with similar socio-demographic diversity.

Staff Diversity

The charter school will reflect the socio-demographic diversity of the District with a targeted focus on economically disadvantaged students as defined by the Georgia Department of Education.*

To achieve this, during each year of the charter term (or until the school is within 10% of the DeKalb County School District average), the school will increase the total percentage of economically disadvantaged students by at least 4%.

Student Diversity

State law allows for the use of the weighted lottery.

Applicants can indicate their “economically disadvantaged” status on the admissions application.

The weight for economically disadvantaged students will be calculated annually by The Museum School Board of Directors using a formula established in the charter contract.

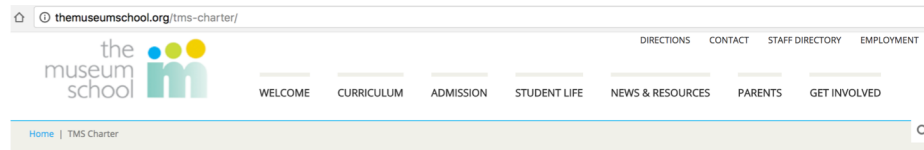
Weighted Lottery

Sibling, board and staff preferences still apply.

If we do not meet our 4% growth goal in any year of the contract, the primary attendance zone can shift to the entire DeKalb County School District.

Weighted Lottery

Additional Resources



TMS Charter

In 2017, The Museum School received renewal of its charter by the DeKalb County Board of Education and the Georgia Department of Education for another five year term through 2022.

To review our charter, see answers to frequently asked questions about our charter or to learn about our strategic actions for driving increased diversity, feel free to download or view these documents:

[View the Charter Contract](#)

[Charter Renewal FAQ](#)

[Strategic Actions for Increased Diversity](#)



Frequently Asked Questions

Why does The Museum School of Avondale Estates have a charter?

The founders of the Museum School of Avondale Estates – a group of dedicated parents and community members – wanted to build a school with the flexibility to implement an innovative curriculum model – [The Museum Model](#). In order to achieve this goal, the school entered into a charter agreement with the DeKalb County Board of Education and the State Department of Education. The contract between these entities – our charter – outlines our autonomy, accountability and agreements.



Partnerships and Expeditions

10 +1 new

(National Center for
Civil and Human Rights)

Formal partnerships with curricular partners

50+

Resource and community partners

163

Expeditions during the 2016-2017 school year

18,193*

* # of students that have used a Museum in a Box trunk since their inception



Museum in a Box



STRONG GOVERNANCE



2018-2023 STRATEGIC PLAN

The Museum School students will achieve and sustain top tier academic results.

- Perform in the top 1% of all charter schools when compared to other Georgia kindergarten through eighth grade charter schools
- Analyze test score data and teacher strategies to ensure students in all sub-groups are growing and successful
- Continue to acquire, analyze, and utilize data through surveys (both qualitative and quantitative) of TMS alumni and success at secondary level. Utilize findings to inform TMS teachers, curriculum, and culture in preparation for education beyond 8th grade
- Ensure rate of academic growth of students is faster than a national norm of peers of kindergarten through eighth grade students

Academic Excellence

Financial Sustainability

The Museum School will maintain financial sustainability by managing revenue and expenditures effectively and proactively forecasting financial growth.

- Manage funds to ensure an operating surplus annually
- Develop an unrestricted cash plan
- Obtain an unqualified audit annually
- Plan for Key Financial Member Succession
- Focus on Long Term Forecasting

The Museum School will maintain and strengthen protocols designed to maximize the sustainability and effectiveness of the Governing Board.

- Identify a diverse group of future contributors and leaders through strategic board recruitment efforts and succession planning
- Verify that board and committee members understand organizational goals and policies and optimize their effectiveness
- Ensure consistent effectiveness of committees and improve communication between various elements of the organization
- Verify that key documents are available and accessible to all when needed, while maintaining security

Strong Governance

The Museum School will ensure necessary financial and community resources are available and will deploy them through responsible investment to sustain our campus, advance safety, and increase our capacity to support students and the learning environment.

- Provide active support, goals and guidance for the Museum School Foundation's efforts to enhance financial resources
- Grow community investment in the school
- Continue to review and implement the recommendations of the Security Master Plan
- Advance sustainable practices throughout the school
- Create and implement an IT master plan
- Seek opportunities to expand the physical space available for education, athletics and recreation

Infrastructure and Resources Growth

The Museum School will ensure school, board, foundation and community leadership clearly and effectively tell The Museum School story.

- Continue to build the local reputation to support the school's mission and charter
- Continue to build the national reputation by telling the story of The Museum School success to key audiences
- Support Fundraising Communications
- Support Recruitment Communications
- Promote Parent Engagement
- Continue to Enhance Strategic Consistency and Efficiency

Effective Communication

Educational Leadership

The Museum School will impact students and teachers at the local, state and national levels by disseminating best practices.

- Share our strategies for success and learn from other successful educators across the nation
- Contribute to the training of high-quality teachers, knowledgeable in educational best practices
- Share our developed curricular materials with other elementary and middle schools through the “Museum in a Box” program
- Support the nationwide network of museum schools



2018-2023 STRATEGIC PLAN

THE MUSEUM SCHOOL FOUNDATION

2 years, \$2 million, 2 classrooms

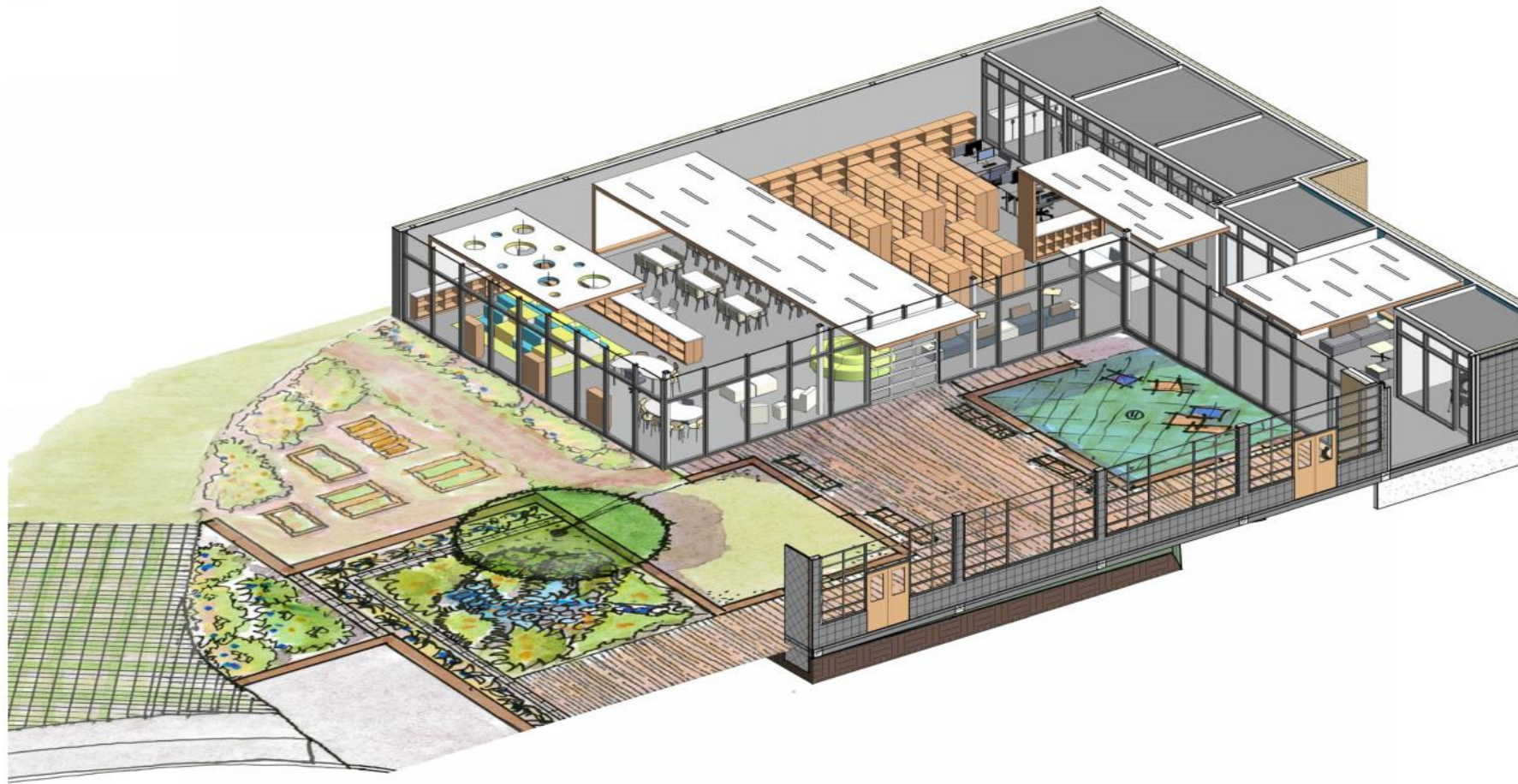
Current Media Center is $\frac{1}{4}$ size it
needs to be.

We need 2 more classrooms.

We lose valuable learning
spaces without a new media
center.

Inspiring Excellence Capital Campaign





THE MUSEUM SCHOOL - MEDIA CENTER AXO

PROJECT: 10130-02

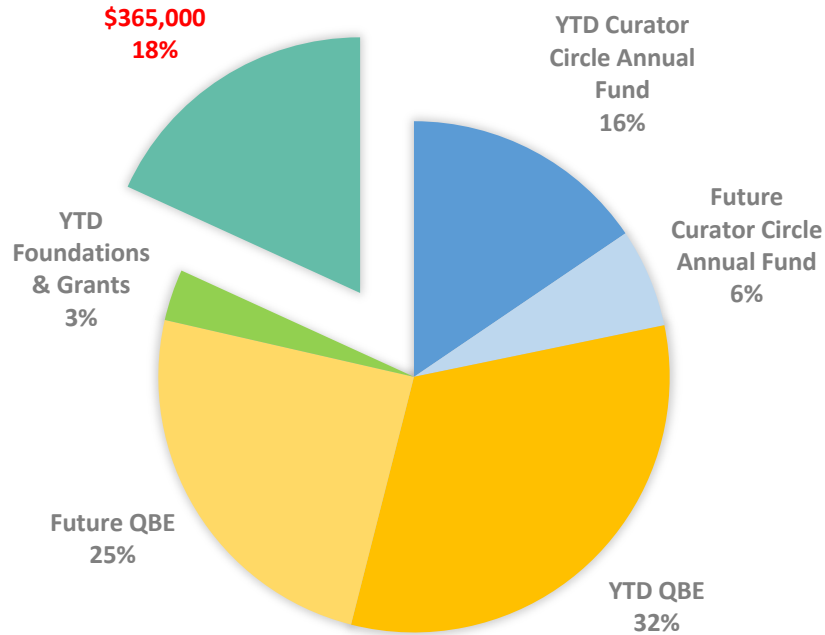
BIG NEWS!!!

\$1,000,000

raised by end of school year

Construction to begin late summer and be completed by start of 2019 school year.

INSPIRING EXCELLENCE
CAPITAL CAMPAIGN FUNDING SOURCES



But, we aren't
done yet!

Historically, Foundations & Grants have accounted for 35% of funding sources.



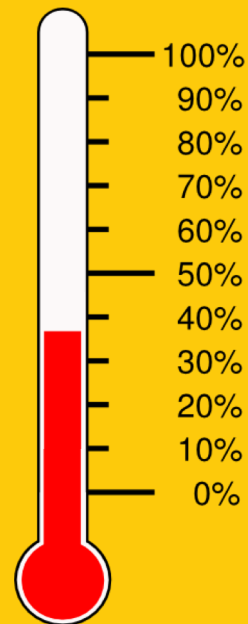
Participation rates are VERY important in securing funds & grants from **external organizations**.

We need to show we are invested in our children's futures and **they** should be, too.

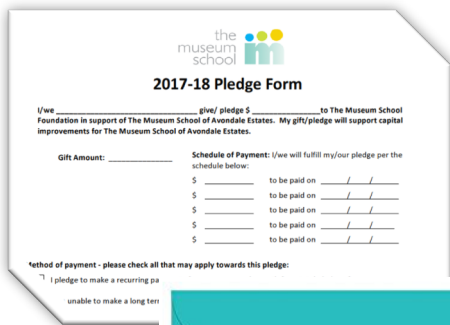
Family Participation

Goal: 100%

Currently: 37%



Pledge/gift forms available tonight



The Museum School of Avondale Estates logo is at the top. Below it is the title "2017-18 Pledge Form". The form contains the following text: "I/we _____ give/pledge \$_____ to The Museum School Foundation in support of The Museum School of Avondale Estates. My gift/pledge will support capital improvements for The Museum School of Avondale Estates." Below this is a section for "Gift Amount: _____" and a "Schedule of Payment" section with four rows, each starting with "\$ _____" and "to be paid on ____/____/____". At the bottom, there is a "Method of payment" section with a checkbox for "I pledge to make a recurring payment" and a note "unable to make a long term".



Every Dollar Counts (Literally!)

Grade-level and classroom
ambassadors welcome – earn
volunteer hours!

emily.gallagher@themuseumschool.org

themuseumschool.org/contribute

Opportunities and Challenges

BUILDING A SUCCESSFUL SCHOOL



Feedback?

Andy Huff

Chair, Board of Directors

andy.huff@themuseumschool.org

Katherine Kelbaugh

Principal

katherine.kelbaugh@themuseumschool.org

