

PRINCIPAL'S REPORT

TO: The Main Street Academy Governing Board
FROM: Cheryl D. Parker, Principal
DATE: October 29, 2019



Student Achievement/Instruction/Curriculum/Initiatives

Career & College Readiness Performance Index (CCRPI) 2019

CCRPI is a comprehensive school improvement, accountability, and communication platform for all educational stakeholders that will promote college and career readiness for all Georgia public school students.

CCRPI Overview (video)

https://gadoepublicstore.blob.core.windows.net/asset-a7192db5-7f8a-4602-b458-34608b243661/CCRPI%20Overview%20video_10-29-18.mp4?sv=2015-07-08&sr=c&si=869756b2-6a43-4541-93e0-ce0e8d95f01b&sig=ZJZNmlGsb%2FV99d7lqWQh%2FHbMyRC2sGuqx2RcWZMJGu8%3D&st=2018-10-29T18%3A30%3A06Z&se=2118-10-29T18%3A30%3A06Z

Glossary of Terms

Navigating the CCRPI Report (video)

<https://gadoepublicstore.blob.core.windows.net/asset-07eb2012-d300-4349-b565-f63789395784/Navigating%20the%20CCRPI%20Report%2011.02.18.mp4?sv=2017-04-17&sr=c&si=8c927640-4927-4816-a5ab-759b1d68a7bf&sig=9qsYLpC5f7AE9%2BtJmWO1WRq%2FPBk%2FmJJNcIAB92zX2Zg%3D&st=2018-12-03T16%3A34%3A08Z&se=2118-12-03T16%3A34%3A08Z>

Overall CCRPI Score – consistent with state law (O.C.G.A. 20-14-33), the overall CCRPI score reported on a 0-100 scale. Each CCRPI indicator and component is also reported on a 0-100 scale. The maximum score for an indicator or component is 100. Components will be weighted and combined according to the weights defined in the table to determine the overall CCRPI score.

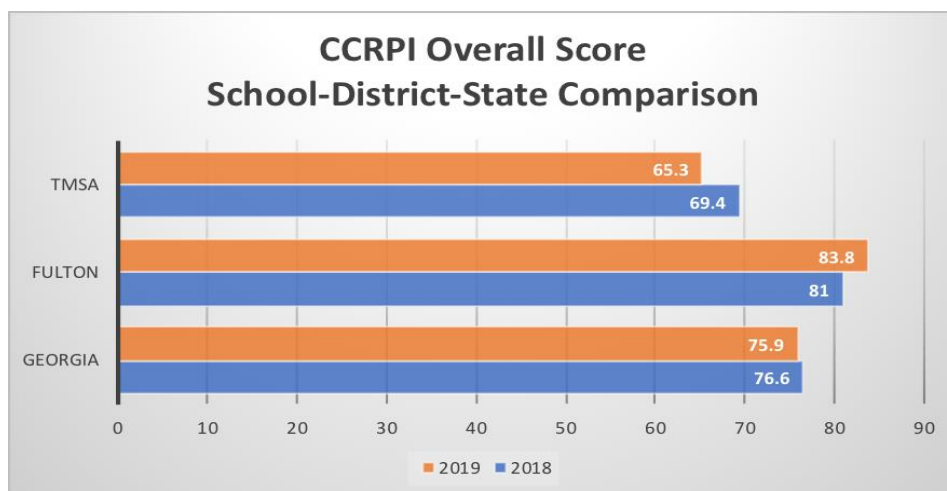
	Elementary	Middle	High
Content Mastery	30%	30%	30%
Progress	35%	35%	30%
Closing Gaps	15%	15%	10%
Readiness	20%	20%	15%
Graduation Rate	---	---	15%

Content Mastery – addresses whether students are achieving at the level necessary to be prepared for the next grade, college, or career. It includes an achievement score in English language arts, mathematics, science, and social studies based on student performance on the Georgia Milestones Assessment System and the Georgia Alternate Assessment GAA 2.00. The achievement score utilizes weights based on achievement level, where Beginning Learners earn 0 points, Developing Learners earn 0.5 points, Proficient Learners earn 1.0 point, and Distinguished Learners earn 1.5 points.

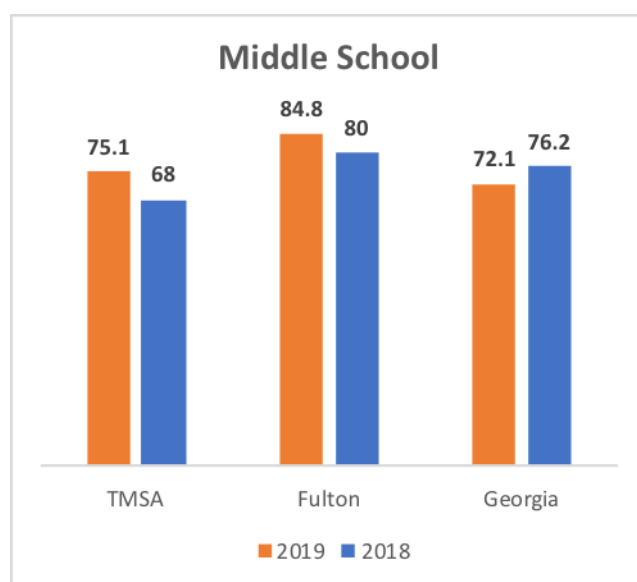
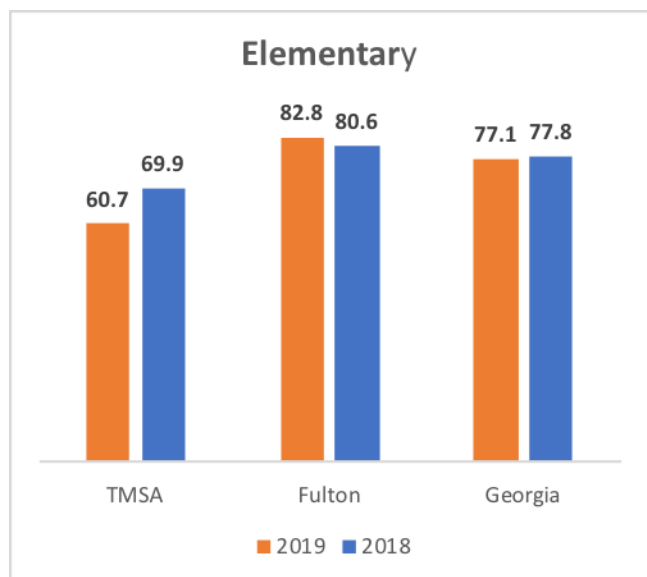
Progress – measures how much growth students are demonstrating relative to academically-similar students. This component utilizes Student Growth Percentiles (SGPs) to measure progress in both English language arts and mathematics. A third indicator measures the extent to which English Learners (EL) are making progress towards English language proficiency, as measured by EL students moving from one state-defined Performance Band to a higher Performance Band on the ACCES for ELLs.

Closing Gaps – addresses whether all students and all student subgroups are making improvements in achievement rates. This component is based on CCRPI improvement targets for academic achievement, which are represented by improvement flags. For each available academic achievement improvement target, 0 points are earned when performance does not improve (red flag), 0.5 points are earned when progress is made but the target is not met (yellow flag), and 1 point is earned when the target is met (green flag). Economically Disadvantaged (ED), English Learner (EL), and Students with Disability (SWD) subgroups can earn 1.5 points when a 6% improvement target is met.

Readiness – addresses whether students are participating in activities preparing them for and demonstrating readiness for the next level, college, or career. Readiness in the elementary and middle grades includes foundational skills and concepts; in secondary grades includes multiple paths to succeed by expanding opportunities and personalizing learning; and graduates are college and/or career ready.



Grade Band Performance



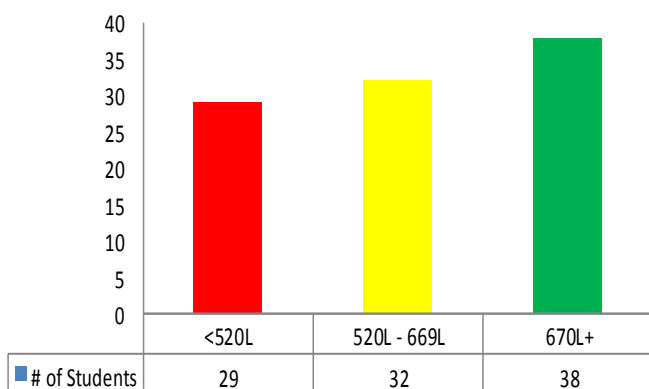
i-Ready Diagnostic

CCRPI / Georgia Milestones Lexile Targets

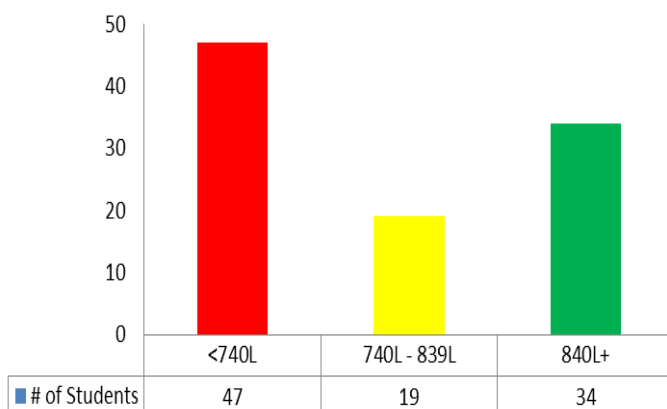
Grade	CCRPI Stretch Lexile Band	CCRPI – Literacy Readiness Indicator Minimum
1	190L to 530L	n/a
2	420L to 650L	n/a
3	520L to 820L	670L
4	740L to 940L	840L
5	830L to 1010L	920L
6	925L to 1070L	997L
7	970L to 1120L	1045L
8	1010L to 1185L	1097L
9 TH Lit	1050L to 1260L	1155L

Elementary Lexile – Diagnostic (Fall)

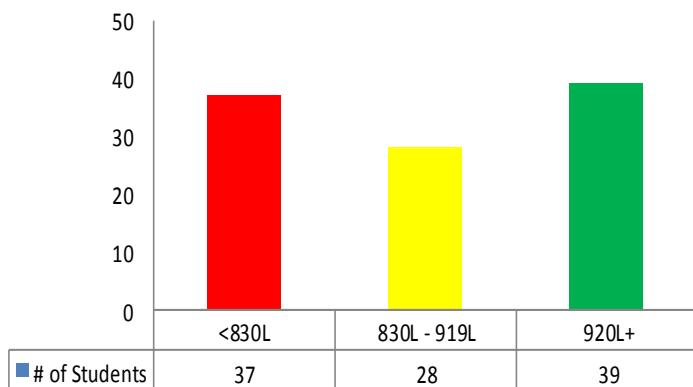
3rd Grade i-Ready Lexile Scores Diagnostic (Fall)



4th Grade i-Ready Lexile Scores Diagnostic (Fall)

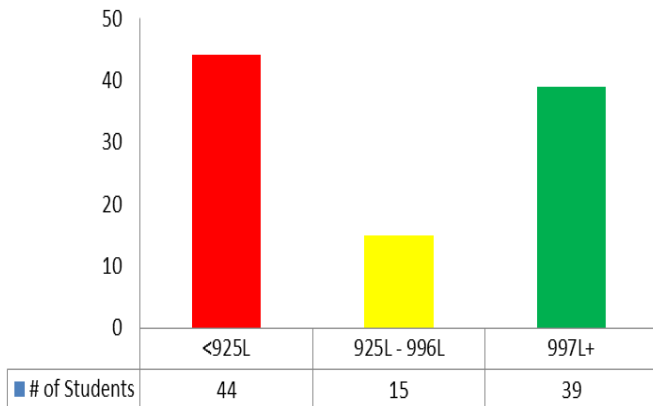


5th Grade i-Ready Lexile Scores Diagnostic (Fall)

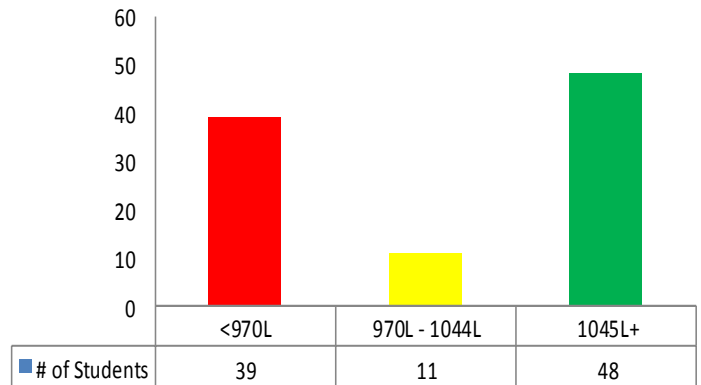


Middle School Lexile – Diagnostic (Fall)

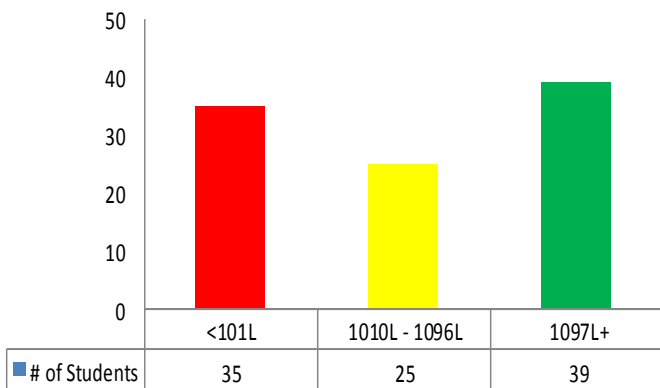
**6th Grade i-Ready Lexile Scores
Diagnostic (Fall)**



**7th Grade i-Ready Lexile Scores
Diagnostic (Fall)**



**8th Grade i-Ready Lexile Scores
Diagnostic (Fall)**



Jumpstart's Read for the Record – November 7th

Jumpstart's *Read for the Record* brings together millions of people each year in classrooms, libraries, community centers, and homes across the US. This annual campaign was launched over a decade ago to highlight the importance of building early literacy and language skills for EVERY child, so that all children have the opportunity to enter kindergarten prepared to succeed.

Read to Them One School, One Book Initiative – Nov/Dec

Our mission is to create a culture of literacy in every home. The benefits of reading aloud are remarkable. Studies have shown that reading to children helps them to listen better and longer, to build bigger vocabularies, to understand concepts better, to feel positive about both books and learning – and much more. When an entire school reads the same book, the buzz and excitement around the book augments these benefits. Reading a book together

brings the added joy of building and expanding a sense of community among students, parents, teachers, and staff – and beyond.

TMSA will participate in fall and spring readings. Wishtree by Katherine Applegate is the fall book.

Professional Development

State Longitudinal Data System (SLDS) – monthly training provided by Georgia Dept. of Ed.

2019-2020 School Calendar

Fulton County Schools voted to amend their school calendar to reflect April 21, 2020, and May 19, 2020 as digital learning days for students and teacher workdays for faculty/staff. I recommend TMSA does not amend the calendar for the aforementioned days. School will remain in session as originally published on the calendar. Please note, TMSA approved to change March 24, 2020 to a teacher workday at the August 27th Governing Board meeting.

Summary:

March 13th – Teacher Workday

March 24th – Teacher Workday

April 21st – School Day

May 19th – School Day

Enrollment

Grade Level	Num. Students October	Num. Students September
Kindergarten	96	94
1 st	95	89
2 nd	100	99
3 rd	100	98
4 th	102	100
5 th	104	104
6 th	100	99
7 th	98	98
8 th	99	99
Total	894	880

RESPECTFULLY SUBMITTED

Cheryl D. Parker
Principal